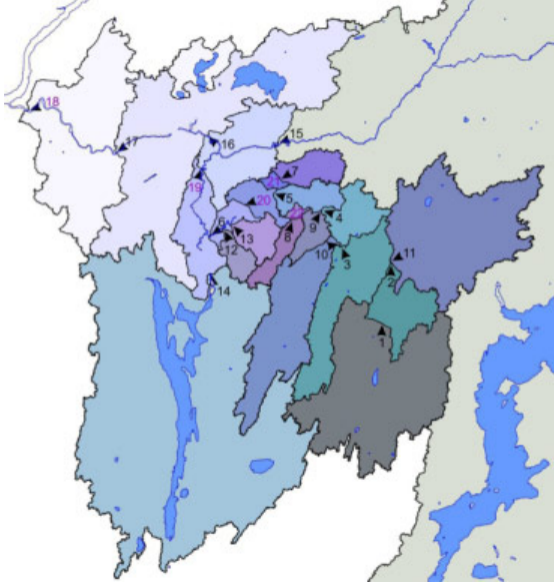
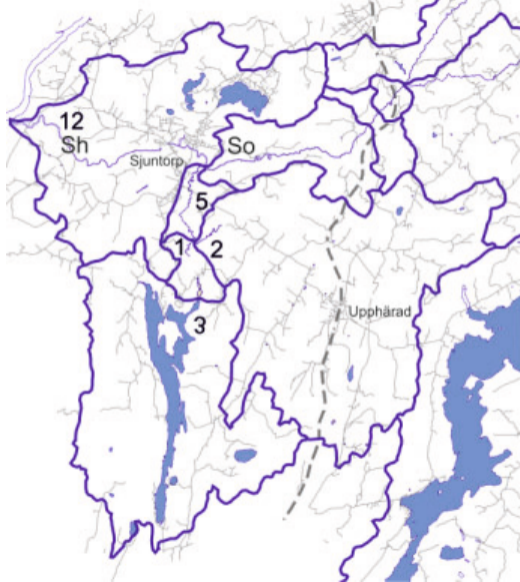


Näringsanalyser i Lillån-Slumpån



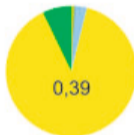






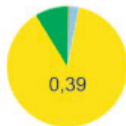
Fosfor, källfördelning och uttransport i kilo per ha enligt vattenwebben

Sh, Slumpån, hela

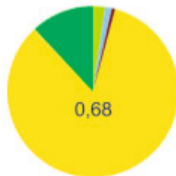


- Sjö
- Skog & Hygge
- Myr
- Jordbruk
- Övrigt
- Enskilda avlopp
- Avloppsreningsverk
- Dagvatten
- Industri
- Internbelastning

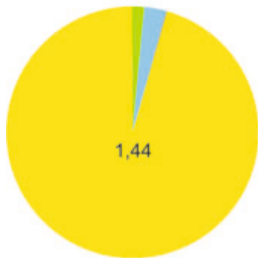
So, Slumpån ovan sammanflöde med Lillån



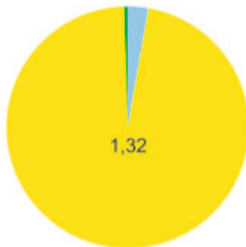
12, Slumpån nedan sammanflöde med Lillån



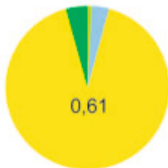
5, Lillån nedre delen



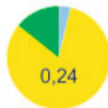
1, Lillån mellan Gravlången och nedre delen



2, Lillån östra grenen



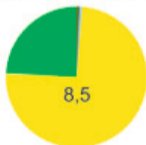
3, Lillån, utflöde Gravlången



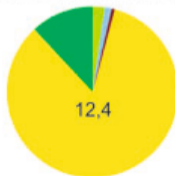
Kväve, källfördelning och uttransport i kilo per ha enligt vattenwebben



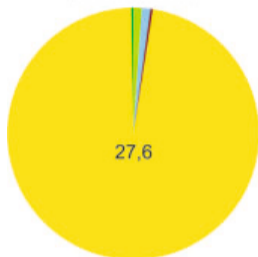
So, Slumpån ovan sammanflöde med Lillån



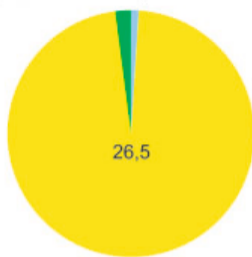
12, Slumpån nedan sammanflöde med Lillån



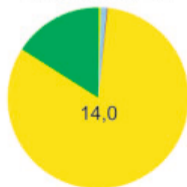
5, Lillån nedre delen



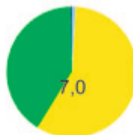
1, Lillån mellan Gravlången och nedre delen

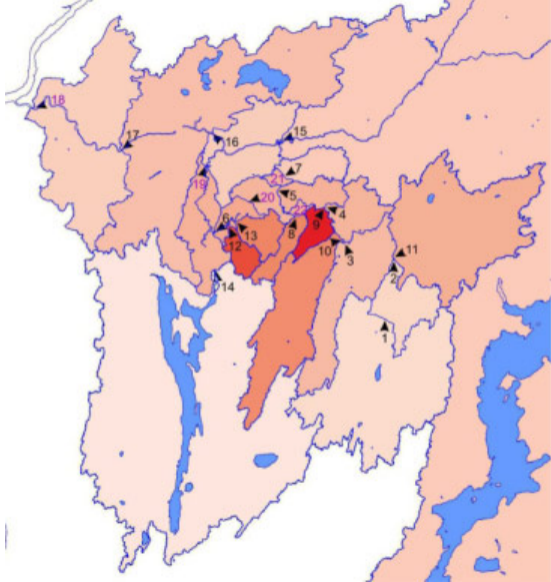


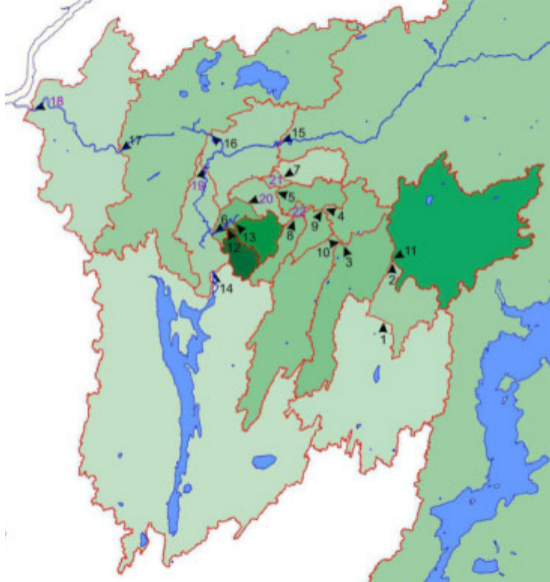
2, Lillån östra grenen



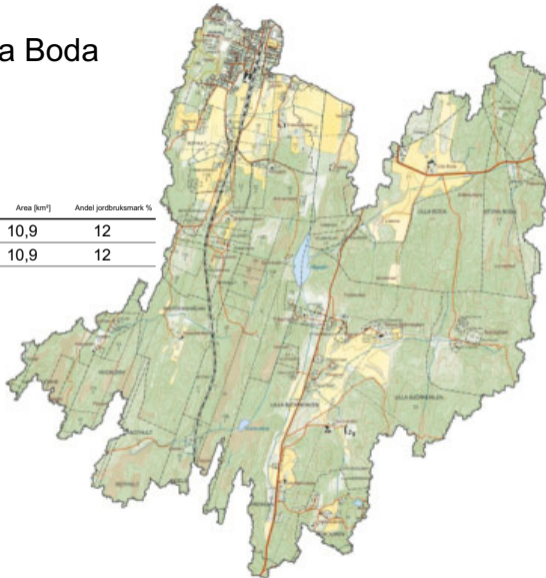
3, Lillån, utflöde Gravlången







1 Stora Boda



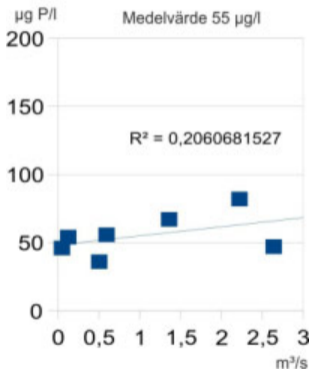
	Area [km ²]	Andel jordbruksmark %
--	-------------------------	-----------------------

Delavrinningsområdet	10,9	12
----------------------	------	----

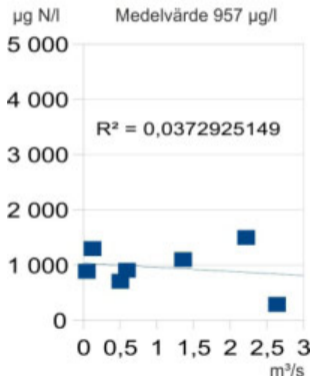
Hela avrinningsområdet	10,9	12
------------------------	------	----

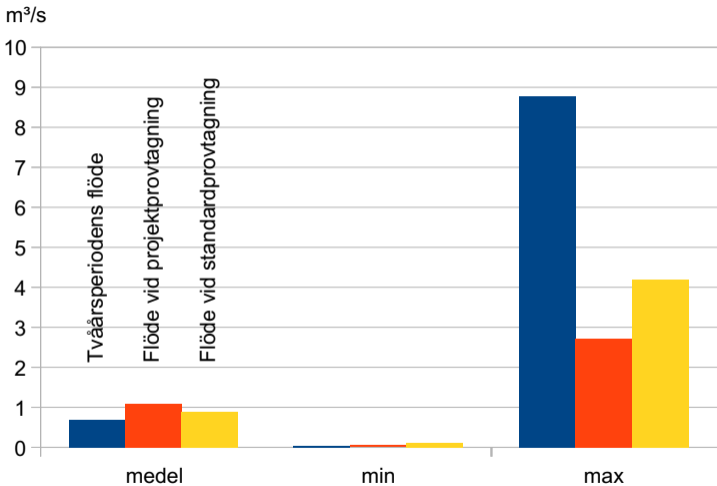


Totalfosfor



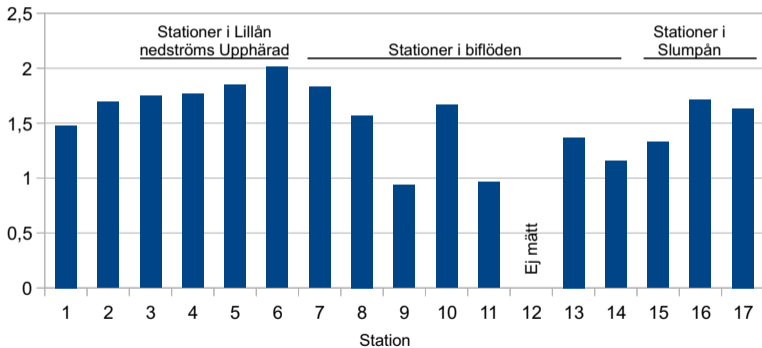
Totalkväve





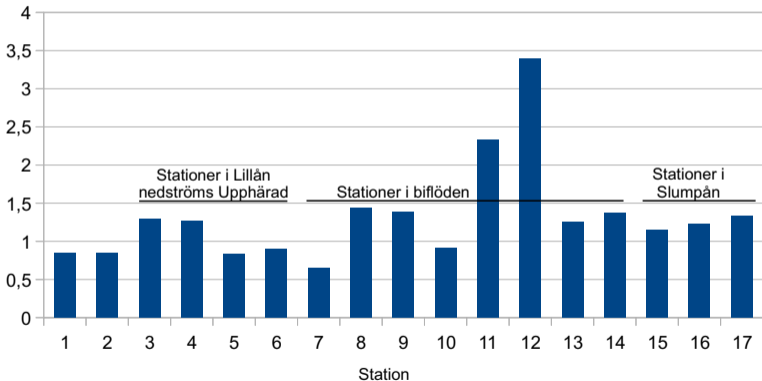
Totalfosfor

Prov 2011-8-30 relativt medelvärde, flöde 2,22 m³/s/l



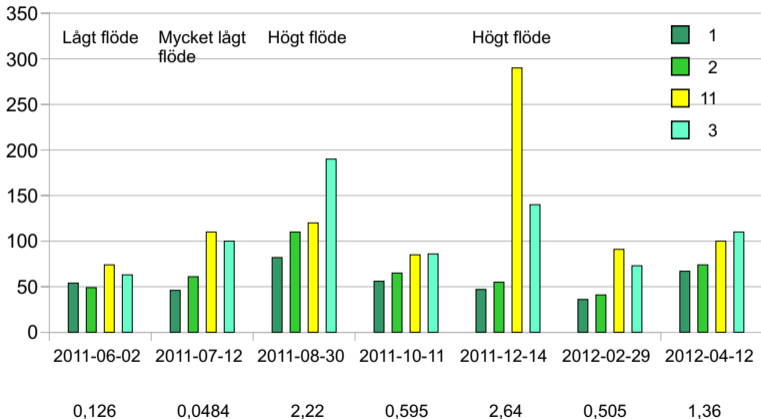
Totalfosfor

Prov 2011-12-14 relativt medelvärde, flöde 2,64 m³/s



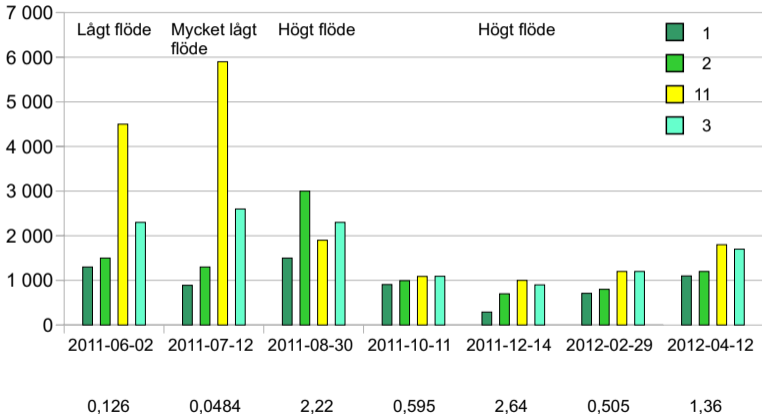
Totalfosfor

$\mu\text{g P/l}$



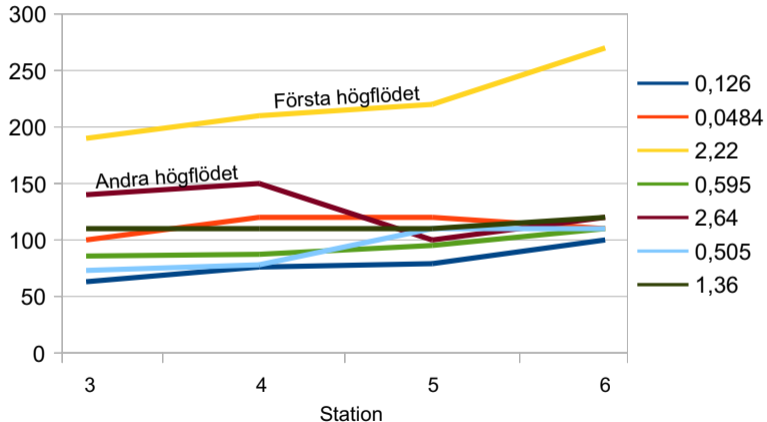
Totalkväve

µg N/l



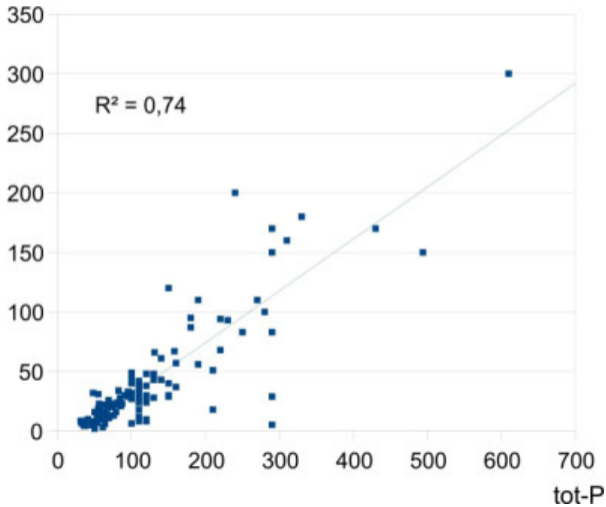
Totalfosfor i Upphäradsgrenen

µg P/l

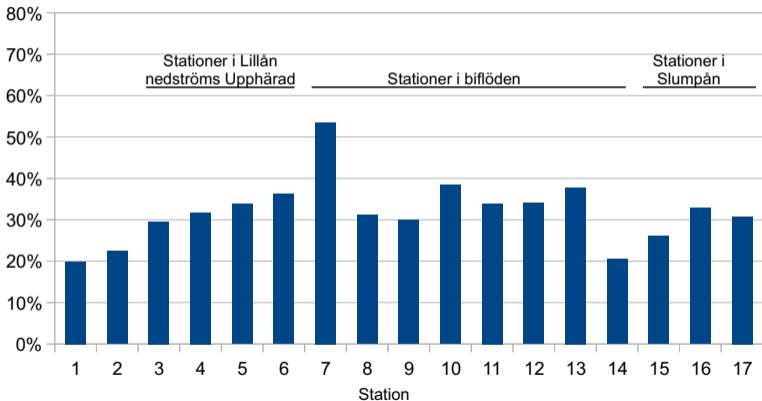


Samband Turbiditet – totalfosfor

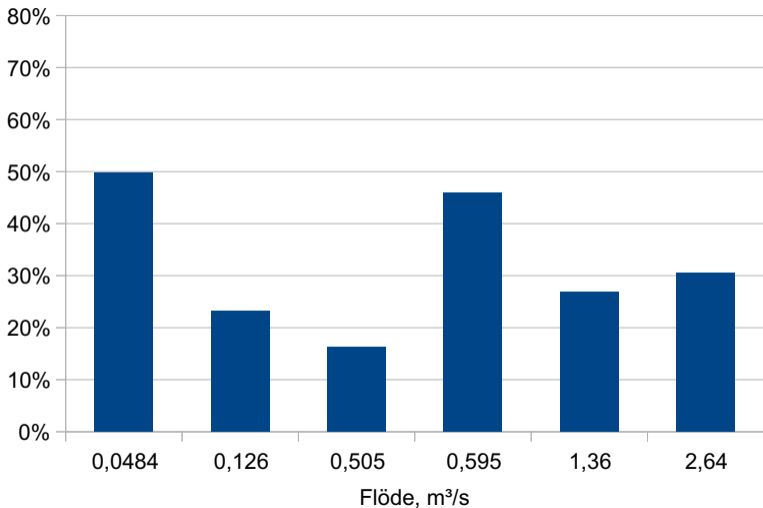
turbiditet



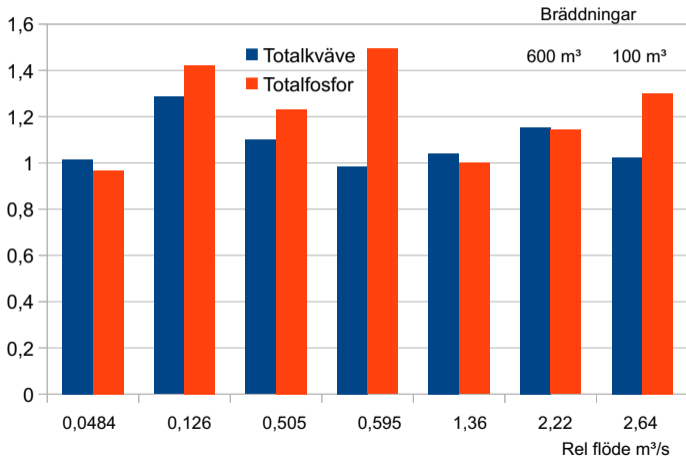
Andel fosfat-fosfor, PO₄

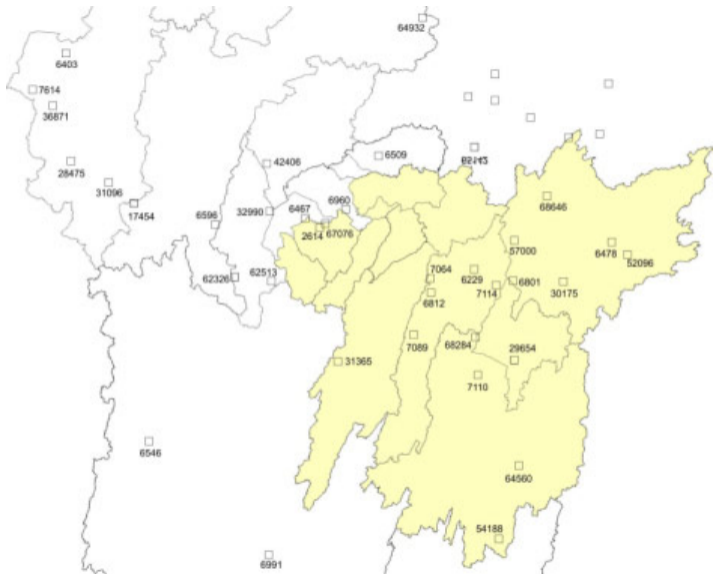


Andel fosfat-fosfor, PO₄



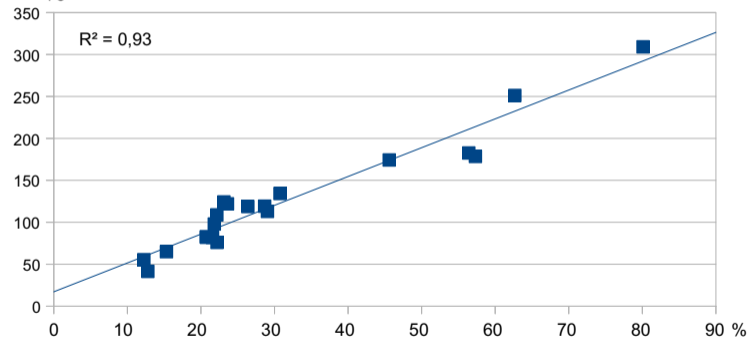
Relationen halter nedströms/uppströms bräddpunkt





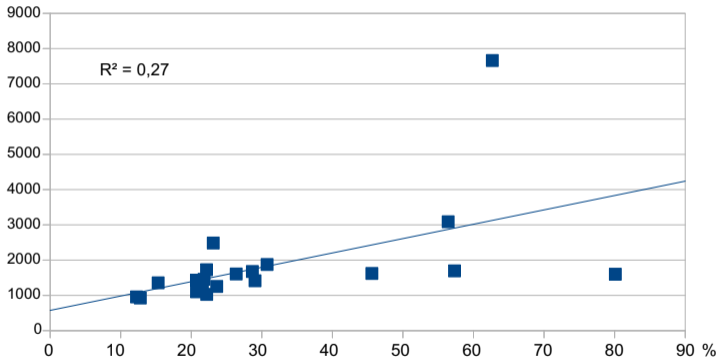
Medelvärde av totalfosforhalten mot andelen jordbruksmark

Tot-P $\mu\text{g/l}$

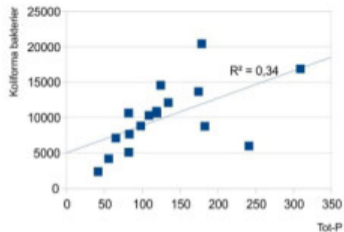


Medelvärde av totalkvävehalten mot andelen jordbruksmark

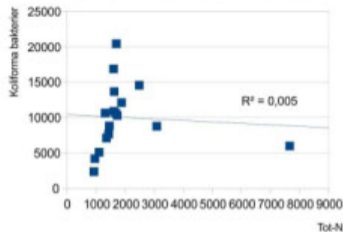
Tot-N $\mu\text{g/l}$



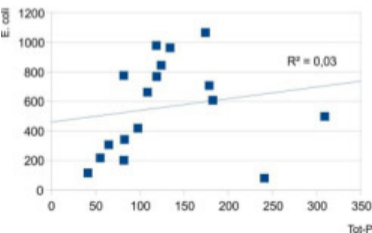
Samband Koliforma bakterier - Tot-P



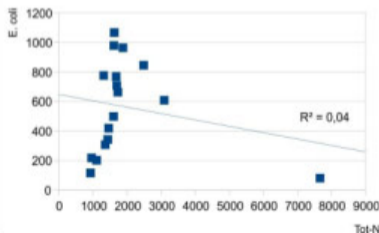
Samband Koliforma bakterier - Tot-N



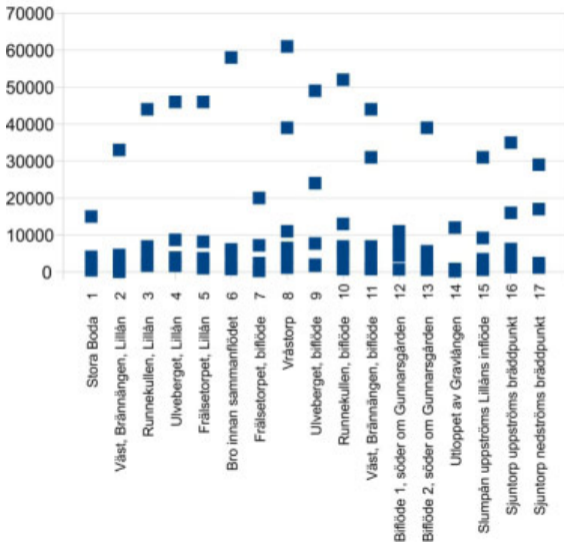
Samband E. coli - Tot-P



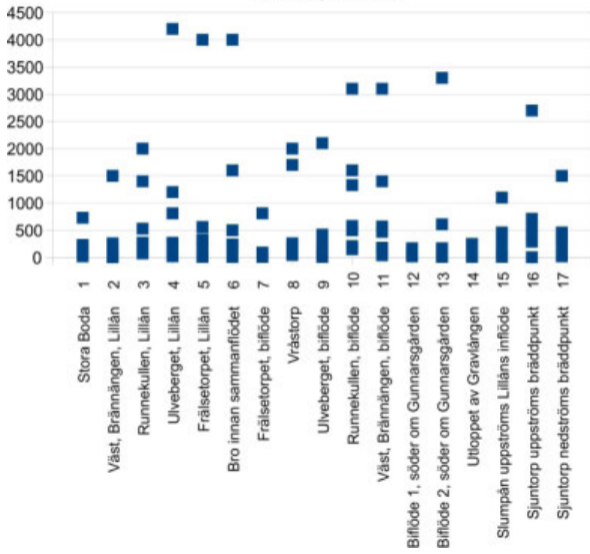
Samband E. coli - Tot-N



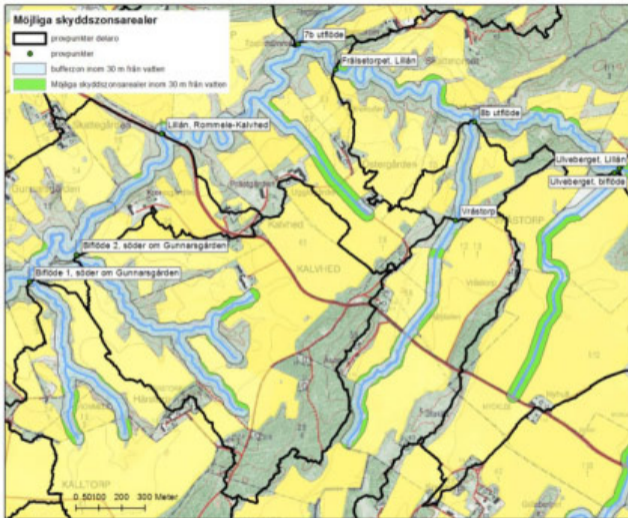
Koliforma bakterier per lokal



E. coli per lokal







Figur 13. Ett exempel på hur områden för möjliga skydds-zoner inom 30 m från vattnet är belägna ovan ravinerna som används som betesmark.